

SUB WOOFER

EBX 250.5 700W

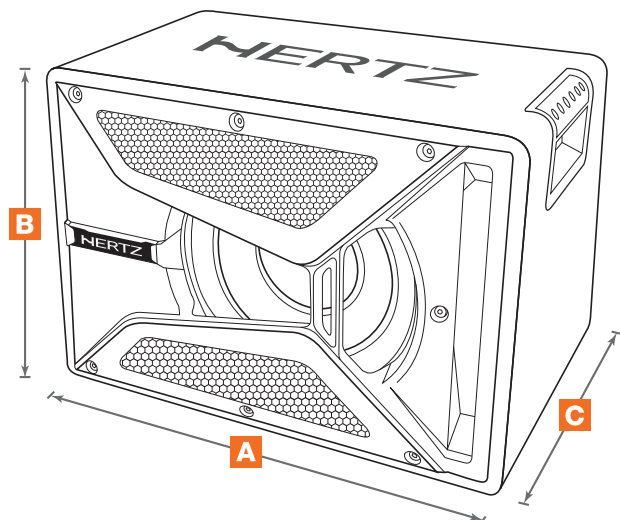
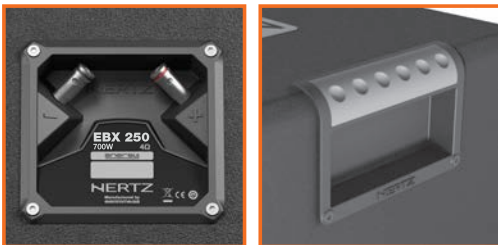


Xponential-Flanged-Duct®

Technical Specifications

Component	Bass Reflex Sub Box	
Size	mm (in.)	250 (10)
Power handling W	peak	700
	cont. program	350
Impedance	Ω	4
Frequency response	Hz	28 ÷ 300
Sensitivity	dB/SPL	93
Magnet size	mm	465 x 365 x 338
D x d x h	(in.)	(18.3 x 14.3 x 13.3)
Magnet	High density flux ferrite	
Cone	Water repellent pressed paper	
Weight of one component	kg (lb.)	15,1 (33.2)

1. 20 mm MDF employed to minimize enclosure losses.
2. Slanted rear panel helps reduce back wave reflections and eases installation.
3. Xponential Flanged Duct.® for powerful, undistorted output; perfect for the long excursion subwoofer used.
4. Molded composite grille offers total speaker protection and great cosmetic appeal.
5. Proprietary connection terminals provide the outmost in functionality and safety.
6. Ergonomic anti-slip rubber handles aid in the removal of the enclosure.



A	465 mm	18.3 in.
B	365 mm	14.3 in.
C	338 mm	13.3 in.